

INVITATION

2017 IPC Nordic Skiing World Cup in Sapporo, Japan

**17th – 22nd March 2017
Nishioka Biathlon Stadium**



Table of contents

A. Invitation

B. General Information

B.1 Organizing Committee

B.2 Key Dates

B.3 Venue

C. Competition Program

D. Competition Office

E. Rules

F. Anti-Doping

G. Visas

H. Waxing Cabins

I. IPC World Cup Award Ceremony

J. Incentive

K. Travel and Transportation

L. Accommodation

L.1 Meals

L.2 Accommodation Fee

M. Entries

M.1 Limit of Entries

M.2 Entry Submission

N. Competition fee

O. Importation/exportation of Rifles

O.1 The Import and Export Procedures for Rifles

O.1-1 Permission to Possess and Use Firearms

O.1-2 Procedure Flow

O.2 Necessary Procedures for Exporting Rifles

O.3 Procedure Method

O.4 Permits

O.5 Storage Method

O.6 Handling the rifles by assistant

P. For more information

A. INVITATION

Dear IPC Nations,

We are delighted to invite all IPC nations to the IPC Nordic Skiing World Cup held at Nishioka Biathlon Stadium, Sapporo from Friday 17th until Wednesday 22th March, 2017.

Entries are now open through the IPC Online System at www.paralympic.org/entries

We look forward to welcoming you in Sapporo!

B. General Information

B.1 Organizing Committee

- **Chief of the competition:** Hirokatsu KANAYA
- **Competition coordinator:** Sirou SATOU
- **Accommodation:** APA HOTEL&RESORT〈SAPPORO〉
- **Technical Delegate:** Georgy Kadykov
- **Biathlon IR:** Joe Bajan

B.2 Key dates

Dates

Friday 17th March to Wednesday 22th March, 2017

B.3 Venue

Nishioka Biathlon Stadium

- **Address:** Nishioka, Toyohira-ku, Sapporo, Hokkaido

C. COMPETITION PROGRAM

Thursday March 16	Arrival
Friday March 17	Official Training Team Captains Meeting
Saturday March 18	CC (F) Middle Woman Stand/VI 7.5km CC Middle Woman Sitting 5.0km CC (F) Middle Man Stand/VI 10.0km CC Middle Man Sitting 7.5km Team Captains Meeting
Sunday March 19	CC (CL) Short Woman Stand/VI 2.5km CC Short Woman Sitting 2.5km CC (CL) Short Man Stand/VI 5.0km CC Short Man Sitting 5.0km Welcome Ceremony
Monday March 20	Official Training Team Captains Meeting
Tuesday March 21	BT Middle Woman Stand/VI 10.0km BT Middle Woman Sitting 10.0km BT Middle Man Stand/VI 12.5km BT Middle Man Sitting 12.5km Team Captains Meeting
Wednesday March 22	BT Sprint Woman Stand/VI 6.0km BT Sprint Woman Sitting 6.0km BT Sprint Man Stand/VI 7.5km BT Sprint Man Sitting 7.5km IPC World Cup Awards Ceremony
Thursday March 23	Departure

D. Competition Office

The competition office will be located in the stadium.

E. Rules

IPC Nordic Skiing competition rules will apply: <https://www.paralympic.org/nordic-skiing>

F. Anti-Doping

Anti-Doping checks will be carried out according to the IPC Anti-Doping Code.

See <http://www.paralympic.org> for details

G. Visas

Those who receive visa for entry Japan must not forget to apply for it in advance.

We will be glad to assist you.

Just send a completed list of names with dates of birth to the organizing committee.

H. Waxing Cabins

The Wax-cabins will be located in the stadium.

The Wax-cabins are available for free, and installed with heaters, power outlets (100V), and desks.

I. IPC World Cup Award Ceremony

The Award Ceremonies will be held on the final day of Wednesday March 22nd in the underground city square in front of Sapporo Station.

J. Incentive

The following incentive will apply to nations applying to compete in the World Cup.

Nations with more than 3 athletes will be subsidised for 2 people's accommodation.

Nations with less than 2 athletes will be subsidised for 1 person's accommodation.

K. Travel and Transportation

Each country is responsible for the arrangement of the round-trip flight to New Chitose Airport.

Due to application procedures for bringing rifles into Japan, we strongly advise entering and departing Japan through New Chitose Airport.

Once you arrive at New Chitose Airport, the Organizing Committee will prepare shuttle buses to APA HOTEL & RESORT SAPPORO. After the competition, we will also organize buses to send you back from the hotel to New Chitose Airport on your departure day. (Between Mar 16th and Mar 23th)

Airport transfers are in accordance with flight arrival. Please fill in the transportation info form and send it to LOC in advance.

Please refer to the following flight information below.

	Airline	Flight	Dep Airport	Dep Time	Arr Airport	Arr Time
March 16 th ,2017	JINAIR	LJ231	INCHEON AIRPORT	8:20	NEW CHITOSE AIRPORT	11:00
	Koreann Air	KE765		10:10		12:55
	Japan Airlines	JL5208		10:35		12:55
	Tway Airlines	TW251		14:20		17:00
	Asiana Airlines	OZ174		15:20		18:00
	Jehu Air	7C1902		18:40		21:20
	Koreann Air	KE795				
	Japan Airlines	JL5152				
March 23 rd ,2017	Koreann Air	KE796	NEW CHITOSE AIRPORT	8:55	INCHEON AIRPORT	11:55
	Japan Airlines	JL5153		12:10		15:10
	JINAIR	LJ232		13:55		17:05
	Tway Airlines	TW252		14:15		17:10
	Koreann Air	KE766		18:10		21:10
	Japan Airlines	JL5209		19:00		22:00
	Asiana Airlines	OZ173				
	Jehu Air	7C1901				

For more information on transportation please contact

JTB Hokkaido

●E-mail: jtb-mice@hkd.jtb.jp

We need a copy of your passport, and information of your rifle to apply for the importation and exportation of your rifle.

(Please See "O. Importation/Exportation of Rifles".)

L. Accommodation

During the event all nations will be accommodated in APA HOTEL & RESORT SAPPORO – The official Athlete Village hotel. Please be clear with exact room requirements and quantity required for your team.

- Enquiries and bookings for accommodation please contact: jtb-mice@hkd.jtb.jp
 - Katsura KAWAGUCHI(Ms.)
 - Ai MORIHARA(Ms.)
- TEL: +81-11-221-4800
- FAX: +81-11-222-5102

APA HOTEL & RESORT SAPPORO

- Address: Kawazoe 4-jo 2-chome
Minami-ku, Sapporo, Hokkaido 005-0804
- TEL: +81-11-571-3111
- Website: http://www.apahotel.com/hotel/hokkaido/04_resort-sapporo/

Free shuttle bus services will be provided between the hotel and the event venue during the competition.

L.1 Meals

Meals will be provided three times a day, starting with dinner on Thursday 16th, until and including breakfast on Thursday 23rd.

L.2 Accommodation fee

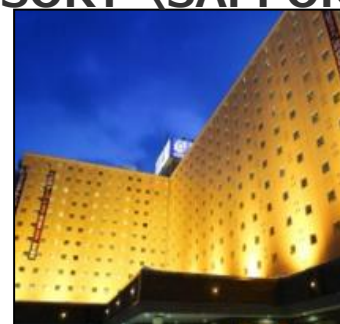
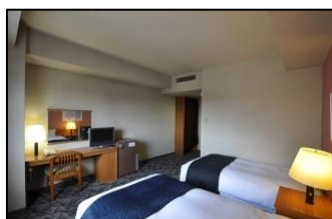
All guests will be accommodated in twin rooms (2 guests per room) unless otherwise requested.

Accommodation costs(including meals) is fixed at €100.00 per night per person.

Those requesting a private room will be charged €140.00 per night.

*This fee includes; bus fare and rental fee of wax cabin.

APA HOTEL&RESORT 〈SAPPORO〉



M. Entries

M.1 Limit of Entries

Entry forms for the 2017IPC Nordic Skiing World Cup in Sapporo, Japan must be sent to the Organizing Committee:

	Deadline
Preliminary entry Form (accommodation & team size)	30 th November
Final Registration Form (for Accreditation, Passport, Flight, Rifle Information, Coach Information, see "O" for details)	20 th December
Race Entries IPC On-line entries system URL:www.paralympic.org/entries	

M.2 Entry Submission

By post :

JAPAN Para-Ski Federation

2017IPC Nordic Skiing World Cup in Sapporo Organizing Committee

- ADDRESS: Nihonzaidan Bld. 4th floor, 2-2, Akasaka 1cyome,
Minato-ku, Tokyo Japan 107-0052

By e-mail

- E-mail : ipcns@jps-ski.com

N. Competition Fee (According to the IPC Competition Fee)

RACE FEE: 20€ per race in keeping with the IPC Competition Fee.

This will be paid to LOC upon arrival to Sapporo. It can also be paid by bank transfer beforehand.

- BANK NAME : MIZUHO BANK, LTD
- SWIFT CODE/BIG CODE : MHCBJPJT
- BRANCH NAME : AZAMINO BRANCH(599)
ADDRESS: 2-1-3 Azamino, Aoba-ku, Yokohama-shi, Kanagawa 225-0011, Japan
- Ordinary Deposit
- BENEFICIARY'S ACCOUNT NO. : BRANCH NO 5 9 9 - ACCOUNT NO 1397975
- BENEFICIARY NAME : JAPAN Para-Ski Federation IPCNS

O. Importation and Exportation of Rifles

Important matters

O.1 The Import and Export Procedures for Rifles

The use of firearms within Japan is not allowed except by those, including the police, who are specified by law to require them in the course of duties, and those who are permitted to possess firearms by the police.

Importing/exporting firearms and explosives into/from Japan is strictly controlled as well. Foreign participants in international competitions are no exception.

Therefore, when you intend to participate in biathlon competitions in Japan, you need to take the following procedures to receive the permit issued by the Japanese government. You also need to report to the Japanese government after importing firearms into Japan.

O.1-1 Permission to Possess and Use Firearms

Participating athletes must apply for permission to possess and use rifles for competitions. This permission is granted for athletes participating in the Games and their rifles used in this competition.

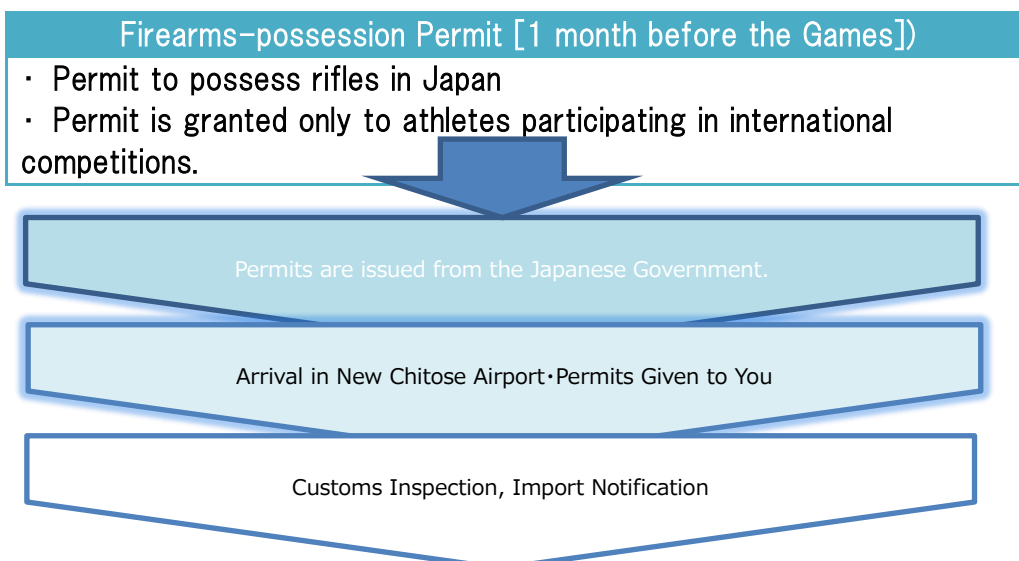
The permission is not to allow them to possess or use any rifle. Athletes granted permission are allowed to use only their own rifles, and are not allowed to use other athlete's rifles.

Permits needed to import rifles and ammunition will be given to you at the airport before the customs inspection (See "*Importation/Exportation of Rifles*".)

O.1-2 Procedure Flow

The general schedule to import rifles and ammunition into Japan is shown below. The LOC will carry out the process on behalf of visiting athletes, due to the very complicated nature of the procedure.

Refer to "*Procedure Method*" for detailed process to commission the LOC to perform the procedures.



O.2 Necessary Procedures for Exporting Rifles

Exporting rifles and ammunitions is also regulated in Japan, and the national permit is needed to export them from Japan.

Export must be notified to the Government of Japan after it is completed.

These procedures will also be taken care of by the Organizing Committee.

O.3 Procedure Method

All these procedures prior to importing/exporting rifles and ammunition will be taken care of by the Organizing Committee.

Please send us PDF data of the Entry Sheet with necessary information for these procedures and evidence documents to us by 20th December, 2016.

- Please send your Entry Sheet to : ipcns@jps-ski.com
- Entry Sheet: send it later
- Required documents :

Document	Permission Permit	Import Permit	Export Permit
Copy of Passport (<i>the page including name, gender, nationality, passport number and the photo</i>)	●		
Reservation information including flight Information*	●	●	●
Photo of the serial number of the rifle (<i>normally impressed on the receiver</i>)	●		
Photo of the entire rifle	●		
Guaranty of the rifle or other document providing the trade name and the date of production	●		
Identity of assistant or coach (Full Name, Nationality, Address, Phone No. and Date of birth)	●		

*If the flight information hasn't yet been determined by 20th Dec, please let us know by the end of January.

O.4 Permits

All the issued permits will be filed together and given to you upon your entry into Japan. These documents are needed for you to possess and use rifles in the Games. Please be sure to carry them with you, and be careful not to lose them.

We will collect these documents when you leave Japan and be responsible for returning them to appropriate organizations.

O.5 Storage Method

Rifles and ammunition must be stored with self-responsibility in accordance with the law. You must not allow anyone else to carry, hold your rifles and ammunitions.

Rifles must be stored in the lockable gun lockers in the hotel room, and the lockers must be locked. Even in the hotel room, it is not allowed to put them on the floor or against the wall so that your roommate or visitor have a chance to take them away.

O.6 Handling of the rifles by assistant

Assistants are only permitted to handle rifles which have been applied for in advance.

In this case, assistants can only handle their rifle during the game.

P. For more information please contact

JAPAN Para-Ski Federation

2017IPC Nordic Skiing World Cup in Sapporo Organizing Committee

Chief of Secretariat: Hideki ARAI

● ADDRESS: Nihonzaidan Bldg. 4th floor, 2-2, Akasaka 1chome,
Minato-ku, Tokyo Japan 107-0052

● TEL: +81-90-6537-9416

● E-mail: jpcns@jps-ski.com